

## SIGNATURE EVENTS

 <p><b>800</b> participants</p>	 <p><b>150</b> bras <b>450</b> in attendance</p>	 <p><b>40</b> bras <b>150</b> in attendance</p>	 <p><b>540</b> in attendance</p>	 <p><b>128</b> golfers</p>
--	---	--	--	---

## CAMPAIGNS






## 2025 FUNDED INITIATIVES

- Patient & Family Support**
  - Pallets of diapers distributed through community diaper drives
  - Car seats for newborns in need
  - Gas cards and transportation assistance for medical appointments
  - Rides to appointments
  - Clothing for patients in need
  - Stay-safe hotel rooms for the HOPE Program
  - Books for newborn gift bags
- Clinical Care & Equipment**
  - New physical therapy equipment
  - Nursing education and training models
  - Lymphedema sleeves
- Compression wearables
- Charging stations throughout CRH facilities
- Prevention & Screening Programs
- Mammograms and follow-up care
- Lung cancer screening programs
- Behavioral & Community Health**
  - Support for the Behavioral Health Unit
  - Mom Mobile
- Employee & Mission Support**
  - Employee Relief Fund assistance
  - Chapel enhancements and accoutrements
  - Capital Campaign support

## JOIN THE MISSION

- Be Part of the Impact!**
- Donate
  - Host an event
  - Donate to the Bra-ha-ha silent auction
  - Decorate a bra for the Bra-ha-ha
  - Business sponsor
  - Register for the 5K
  - Join the Society of '76
  - Attend an event
  - Walmart Registry (help our patients)
  - Purchase raffle tickets
  - Designate CRHF on Kroger Rewards
  - Attend restaurant nights
  - Volunteer at the events
- Visit [Foundation.ChesapeakeRegional.com](https://Foundation.ChesapeakeRegional.com) for more information!



757-312-6314 | [ChesapeakeRegional.com/Give](https://ChesapeakeRegional.com/Give)

# 2025 Annual Summary



## ACKNOWLEDGEMENT

With heartfelt appreciation, we thank the patrons, partners and supporters whose generosity fuels our mission and strengthens the health of our community. Your commitment to **Chesapeake Regional Health Foundation** enables and empowers **Chesapeake Regional Healthcare** to meet the evolving healthcare needs of our community and neighbors. This ensures the continued delivery of exceptional care to the individuals and families we serve.

As we celebrate our **50<sup>th</sup> Anniversary** in 2026, we proudly reflect on the remarkable journey from a single community hospital in Chesapeake to a comprehensive regional healthcare system serving all of Hampton Roads and northeast North Carolina. This progress is a testament to the enduring support of those who believe in our mission and invest in the health of our region.

## CRHF 2025-26 BOARD OF DIRECTORS

- |   |  |  |
|---|--|--|
| <p><b>Michael "Mike" J. Kos</b>, Chair<br/>Southern Bank</p> <p><b>W. Hal Scott</b>, Vice Chair<br/>AGI</p> <p><b>Robert "Bob" Mohrhussen</b>, Secretary<br/>Performance Foods</p> <p><b>Stephen Haynes</b>, Treasurer<br/>Davis Law Group, P.C.</p> <p><b>Dave Hare</b>, Member-at-Large<br/>TowneBank Chesapeake</p> <p><b>Mark Hughes, MD</b>, Member-at-Large<br/>Chesapeake Emergency Physicians</p> | <p><b>Louise Quales</b>, Immediate Past Chair. President<br/>Chesapeake General Hospital Auxiliary</p> <p><b>Pastor L. Jay Brown</b><br/>The Mount Global Fellowship of Churches</p> <p><b>Donald S. Buckley, PhD</b>, President Emeritus<br/>Chesapeake Regional Healthcare</p> <p><b>Charlie Hackworth Sr.</b><br/>Hackworth Reprographics Inc.</p> <p><b>Lakysha Laing</b><br/>The Empowerment Collective</p> <p><b>Anthony Morris, MD</b><br/>Bayview Physicians Group</p> | <p><b>Tara Preston</b><br/>Preston Homes, Inc.</p> <p><b>Terri Ruby</b><br/>New Horizon Bank</p> <p><b>Sylvia White</b><br/>Dominion Energy</p> <p><b>P. Riley Wirth</b><br/>Wirth Development Corporation</p> |
|---|--|--|



The Chesapeake Regional Health Foundation was founded in 1993 and is a 501(c)(3) nonprofit organization.

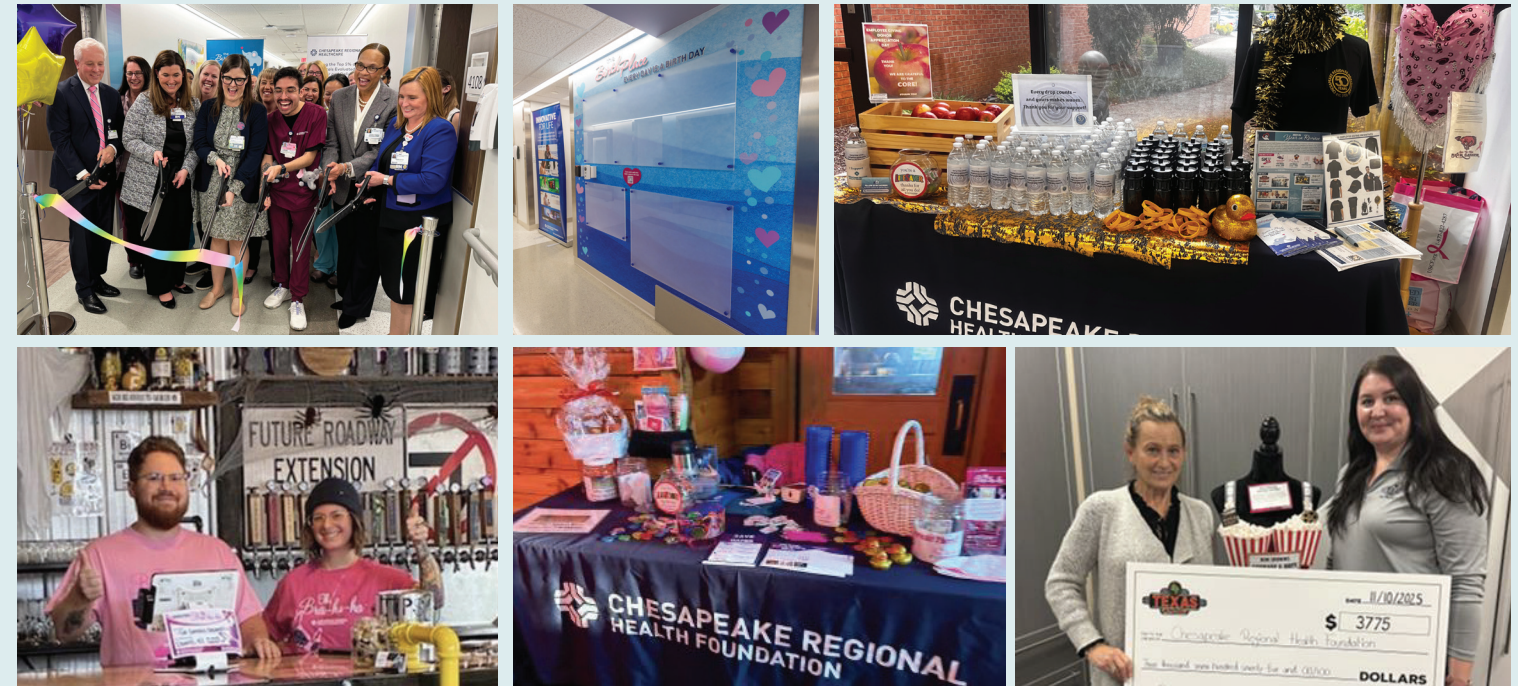
757-312-6314 | [ChesapeakeRegional.com/Give](https://ChesapeakeRegional.com/Give)

# COMMUNITY ENGAGEMENT IS AT THE HEART OF THE CHESAPEAKE REGIONAL HEALTH FOUNDATION'S MISSION.

Throughout 2025, we actively connected with our community through many events, which increased visibility, strengthened trust, and fostered meaningful relationships across our region.

By meeting people where they are: listening, collaborating, and showing up with purpose, Chesapeake Regional Health Foundation supported community well-being while deepening lasting, healthy connections that advance our shared commitment to care, compassion, and regional impact.

Aside from our signature events, campaigns like the Renovated BirthPlace featuring the *Every Day is a Birth Day* Baby Wall, Employee Giving, Physician Giving, Grateful Patient, and third-party events all help to fund important programs, services, building expansions, unit renovations, equipment needs and more.



The Foundation was able to help fund a number of important initiatives, including: the (re)launch of our Mom Mobile, the Richard S. Bray Critical Care Tower, pallets of diapers for two diaper drives, and new equipment for Physical Therapy, to name a few!

